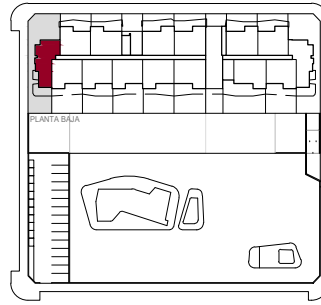


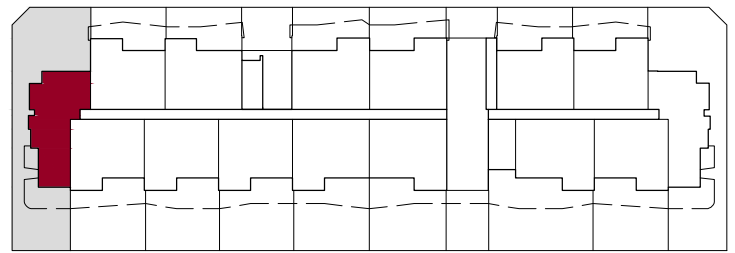
# RESIDENCIAL DULY SAN MIGUEL DE SALINAS

**Duly**  
INVESTMENT  
[www.dulyinvestment.com](http://www.dulyinvestment.com)

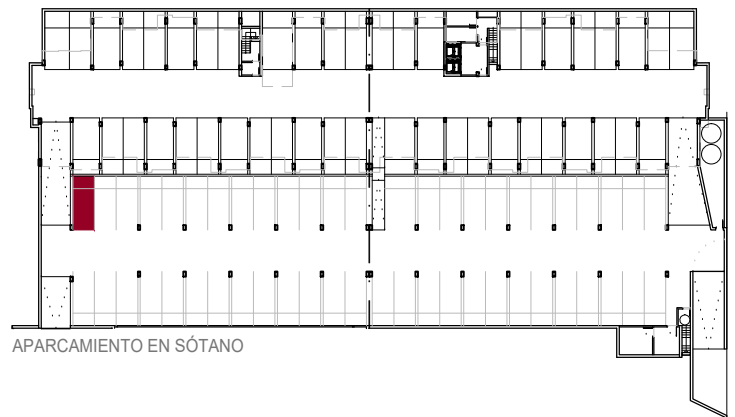


SUP. VIVIENDA — 75.69 m<sup>2</sup>  
SUP. TERRAZA — 154.63 m<sup>2</sup>

VIVIENDA 001  
PLANTA BAJA



PLANTA BAJA



APARCAMIENTO EN SÓTANO



\* Without Contract Value / Sin Valor Contractual



0 0.5 1 2 3  
ESCALA GRÁFICA